

**BTNL8 Antibody (Center)**  
**Affinity Purified Rabbit Polyclonal Antibody (Pab)**  
**Catalog # AP5012c****Specification**

---

**BTNL8 Antibody (Center) - Product Information**

Application	FC, WB,E
Primary Accession	<a href="#">Q6UX41</a>
Other Accession	<a href="#">Q6UXE8</a>
Reactivity	Human
Host	Rabbit
Clonality	Polyclonal
Isotype	Rabbit IgG
Calculated MW	56748
Antigen Region	257-285

**BTNL8 Antibody (Center) - Additional Information****Gene ID** 79908**Other Names**

Butyrophilin-like protein 8, BTNL8

**Target/Specificity**

This BTNL8 antibody is generated from rabbits immunized with a KLH conjugated synthetic peptide between 257-285 amino acids from the Central region of human BTNL8.

**Dilution**

FC~~1:10~50

WB~~1:1000

E~~Use at an assay dependent concentration.

**Format**

Purified polyclonal antibody supplied in PBS with 0.09% (W/V) sodium azide. This antibody is purified through a protein A column, followed by peptide affinity purification.

**Storage**

Maintain refrigerated at 2-8°C for up to 2 weeks. For long term storage store at -20°C in small aliquots to prevent freeze-thaw cycles.

**Precautions**

BTNL8 Antibody (Center) is for research use only and not for use in diagnostic or therapeutic procedures.

**BTNL8 Antibody (Center) - Protein Information****Name** BTNL8



**Function** May stimulate primary immune response. Acts on T-cell stimulated sub-optimally through the TCR/CD3 complex stimulating their proliferation and cytokine production.

**Cellular Location**

Membrane; Single-pass type I membrane protein

**Tissue Location**

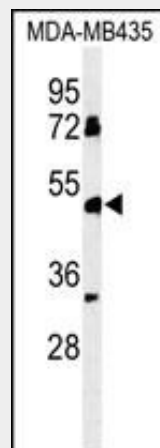
Expressed in neutrophils. Isoforms 1 and 5 are expressed at high levels in the colon, lung, testis, lymph nodes and thyroid tissue. Isoform 5, but not isoform 1, is detected in spleen

**BTNL8 Antibody (Center) - Protocols**

Provided below are standard protocols that you may find useful for product applications.

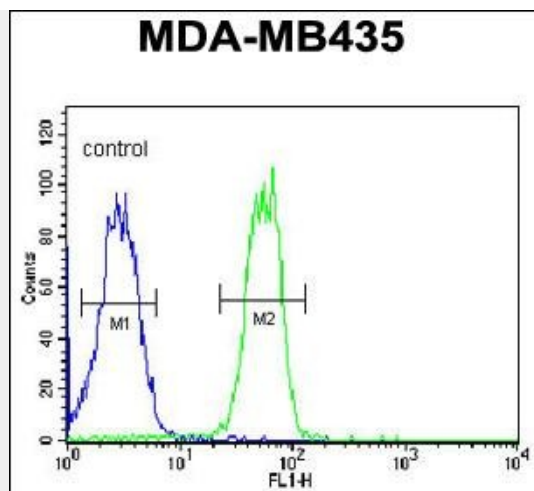
- [Western Blot](#)
- [Blocking Peptides](#)
- [Dot Blot](#)
- [Immunohistochemistry](#)
- [Immunofluorescence](#)
- [Immunoprecipitation](#)
- [Flow Cytometry](#)
- [Cell Culture](#)

**BTNL8 Antibody (Center) - Images**



Western blot analysis of BTNL8 Antibody (Center) (Cat. #AP5012c) in MDA-MB435 cell line lysates (35ug/lane). BTNL8 (arrow) was detected using the purified Pab.





BTNL8 Antibody (Center) (Cat. #AP5012c) flow cytometric analysis of MDA-MB435 cells (right histogram) compared to a negative control cell (left histogram). FITC-conjugated goat-anti-rabbit secondary antibodies were used for the analysis.

#### **BTNL8 Antibody (Center) - References**

Kimura, K., et al. Genome Res. 16(1):55-65(2006)  
Strausberg, R.L., et al. Proc. Natl. Acad. Sci. U.S.A. 99(26):16899-16903(2002)